

ALLINA HEALTH LABORATORY

Memo

To: Allina Health Laboratory outreach clients

From: Allina Health Laboratory outreach services

Date: October 23, 2020

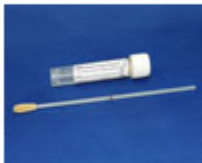
Re: **Supply backorders and allocations**

Allina Health Laboratory continues to experience nationwide manufacturer backorders and/or allocation situations for multiple supply items.

We want to make sure that our clients have the most current information available, however, rather than send out email messages each time there is a change, or a substitute item, we will ensure that information is included in our supply catalog and that tests are linked to the substitute product. An example is included in the screen shots below.

ESwab standard tip collection kit (white)

Item Name: **ESwab standard tip collection kit (white)**



BD™ ESwab Collection Kit Regular Flocked Swab (white cap) for routine aerobic and anaerobic bacteria, GC or yeast cultures & Influenza antigen or RSV antigen.

7/31/2020

This product is currently on manufacturer allocation and should be used for limited tests (see the Test information on the More Info page).

The suggested replacement products are the [ESwab mini-tip collection kit \(green\)](#) or the [ESwab flexible mini-tip collection kit \(blue\)](#).

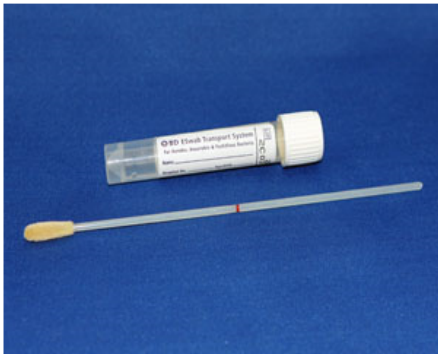
Item Name: ESwab standard tip collection kit (white)

Item number: 254730

Unit of measures: Box of 50
Each

Item Description:

BD™ ESwab Collection Kit Regular Flocked Swab (white cap) for routine aerobic and anaerobic bacteria, GC or yeast cultures & Influenza antigen or RSV antigen.



MSDS:

[Material safety data sheet](#)

Test information:

[Strep A PCR \(12796/LAB12796\)](#)

[Throat culture \(6563/87070.6\)](#)

Strep A PCR-12796

Test info

Specimen

Performance

Clinical and Interpretive info

Billing

Tracking

Specimen type:

Swab of posterior pharynx & tonsils (oropharyngeal)

Collection container:

[ESwab standard tip collection kit \(white\)](#)

