

## In This Issue

### Billing and compliance

- ICD reminder
- Annual ICD updates
- Remittance of payment

### COVID-19 result communication

### Immunohistochemistry

- Claudin-4 by IHC

### Referral Testing

- Serotonin, serum assay changes
- Viscosity, serum reference range change

### Supplies

- Aptima Unisex swab specimen collection kit backorder

### Website

- Supply catalog instructions updated

#### Phone

612-863-4678  
800-281-4379

#### Fax

612-863-4067

---

---

## **BILLING AND COMPLIANCE**

### **ICD reminder**

The Allina Health Laboratory Billing department has noted continued submission of requests for testing accompanied by ICD-9 codes. The Centers for Medicare & Medicaid Services (CMS) rule mandated that to successfully bill for services, ICD 10 codes were to be put into use in October of 2015.

Requests for testing submitted using ICD-9 codes will result in delayed claim filing to allow for communication with the ordering site to obtain valid codes, and if compliant codes are not received, can result in the charges for testing being billed to the ordering facility. Please ensure that all requests for testing that are to be billed to patient insurance are accompanied by valid ICD 10 diagnosis codes.

### **Annual ICD updates**

Effective October 1 of each year, the new complete official ICD (International Classification of Diseases) coding sets, maintained by the National Center for Health Statistics (NCHS) of the Centers for Disease Control and Prevention (CDC), become effective. ICD is a system used by physicians and other healthcare providers to classify and code all diagnoses, symptoms and procedures recorded in conjunction with hospital care. The coding sets reflect the naming convention of the following year but do not wait until that calendar year to take effect.

Please be sure to update your coding materials and have the new codes ready for use on October 1st. Using the new codes sets on the effective date will help avoid faxes and/or calls from our lab billing department requesting the updates.

### **Remittance of payment**

When submitting payment to Allina Health Laboratory, please include the invoice number on the check. This will expedite getting the payment credited properly to your account.

---

---

## **COVID RESULT COMMUNICATION**

As the COVID-19 pandemic continues, and testing for the virus has become more routine, Allina Health Laboratory made the decision to discontinue the practice of calling results of the COVID-19 testing effective September 21, 2020.

COVID-19 test results are not considered critical, so whether positive or negative, will no longer be called to the ordering site. Results are communicated to our clients via their established report routing system.

Please share this information with all affected parties at your site.

---

---

# IMMUNOHISTOCHEMISTRY

## Claudin-4 by IHC

The Allina Health Immunohistochemistry (IHC) laboratory is pleased to share that Claudin-4 by IHC is now being offered. Our IHC request form has been updated to include this new stain.

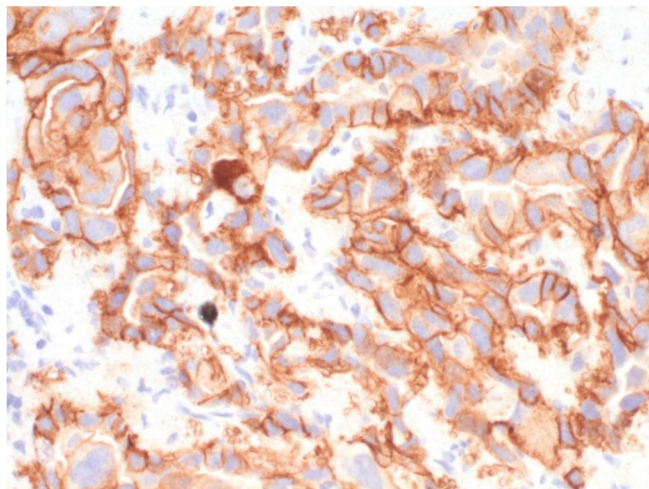
Claudin-4 should be used as part of a panel of Immunohistochemical stains to evaluate neoplasms of epithelial differentiation from benign mesothelial cells and mesothelial neoplasms. Claudin-4 has a reported sensitivity ranging from 91-100% and a specificity of 94-100% for epithelial neoplasms. Rare mesothelial lesions and benign mesothelial cells have been reported to show focal granular cytoplasmic (not membranous) positivity.

### Specifications

Claudin-4 is one of 27 proteins that comprise functional constituents of epithelial tight junctions, which are expressed in the majority of epithelial cells. These proteins are present at epithelial and endothelial cell interfaces and are responsible for ion flux, recruitment of signaling protein and regulating cell proliferation and differentiation. Claudin-4 is generally overexpressed in epithelial neoplasms.

### Staining patterns

Membranous staining  
Cytoplasmic staining is considered non-specific



# REFERRAL TESTING

## Serotonin, serum assay changes

LabCorp has announced a methodology change for the Serotonin, serum assay (13377/ LAB13377) which will occur on September 21, 2020. As a result of the methodology change, several changes in specimen requirements will also occur.

	Current	NEW
Methodology	High-pressure liquid chromatography (HPLC) with electrochemical (EC) detection	Liquid chromatography/tandem mass spectrometry (LC/MS-MS)
Patient prep	None	Monoamine Oxidase inhibitor drugs should be discontinued for at least one week prior to sampling as they tend to increase the level of Serotonin
Specimen volume	2.0 mL	1.0 mL
Minimum volume	1.0 mL	0.5 mL
Collection container	Red	Gold SST
Processing	Spin, separate and freeze	Spin
Transport container	LabCorp screw-capped purple frozen plastic transport tube labelled as serum	Gold SST
Transport & stability	Frozen - 13 days	Ambient - 7 days

## Viscosity, serum reference range change

LabCorp has announced an upcoming reference range change for the Viscosity, serum (13331) assay, effective October 12, 2020.

Current (relative to saline)	NEW (relative to saline)
1.6 – 1.9	0 – 5 yrs: not established 6 – 50 yrs: 1.4 – 2.0 >50 yrs: 1.4 – 2.1
Values >2.7 may indicate paraproteinemia is present	

---

---

## SUPPLIES

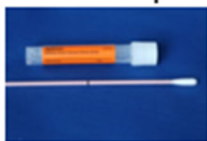
### Aptima Unisex swab specimen collection kit backorder

Due to a manufacturer backorder, the Aptima Unisex swab specimen collection kit is currently unavailable.

Alternate supply offerings are the Aptima Multitest swab specimen collection kit, which can be used for vaginal sample collections, and the Aptima Urine specimen collection kit which can be used for male or female urine collections. The assay sensitivity is the same for all the specimen types.

#### Aptima Multitest swab specimen collection kit

Item Name: Aptima Multitest swab specimen collection kit



For use in collection of eye/ocular (corneal/conjunctiva), oral/mouth, rectal and vaginal samples.

#### Aptima Urine specimen collection kit

Item Name: Aptima Urine specimen collection kit



Aptima urine collection kit

---

---

# WEBSITE

## Supply catalog instructions updated

The Allina Health Laboratory Supply catalog instructions have been updated and are available on our website.

For your convenience, you may order all of the supplies necessary to send your samples to Allina Health Laboratory for testing, online, using our electronic Supply Catalog.

It is the policy of Allina Health Laboratory to consistently and fully comply with all laws and regulations pertaining to services, and billing for services and costs. In order to be compliant, *Allina Health Laboratory can only provide you with supplies directly used in submitting samples to our laboratory.*

Go to our homepage [www.allinahealth.org/allinahealthlaboratory](http://www.allinahealth.org/allinahealthlaboratory)

Once at the home page, click on **Supply catalog** on the left hand side of the page.


### TO ORDER:

- Locate the needed product by viewing in the appropriate product category or by searching the product keywords

- Click on the **More info** button to view additional information about the product such as tests that it is used for, manufacturer and MSDS information
- Click the **Add to Cart** button to order
- Enter your **Customer Code** and click **Next Step**

- Enter the Unit of measure and quantity and click **Update**
- If you determine you do not need the item, click **Remove**
- Search for and add additional items as needed
- Click on **Checkout** ► when you are finished selecting items

### CHECKOUT:

- Verify your shipping address
- Enter a contact name, phone number where you can be reached for questions, and any special instructions
- Confirm your order items, units and quantity and click **Submit**
- Click **Log Out**  to complete the order process

### TRACK YOUR ORDER:

- On the [Supply catalog](#) home page, enter your **Customer code** (in all CAPS) or the **Order Reference number** and click **Check your order status**

Check your order status entering your order reference number or customer code below

Customer code

Order Reference number

- Entering your **Customer code** (in all CAPS) will retrieve a history of your recent orders
- Entering an **Order Reference number** will retrieve the specific order

*If you have any questions, or need assistance placing your order, please contact Allina Health Client Services at (612) 863-4678 or your account representative.*

---

---

**Thank you for choosing Allina Health Laboratory**

**We appreciate your business!**