

**BAP1 BY IHC**  
12376/12379

**QUICK REFERENCE**

The Allina Health Laboratory Immunohistochemistry department is no offering the BAP1 stain.

**DETAILS**

<b>Test name:</b>	BAP1 by IHC
<b>Test number:</b>	12376 - Technical only, 12379 - Technical & interpretation
<b>Excellian order number:</b>	LAB12376 LAB12379
<b>Alternate names:</b>	Ubiquitin carboxyl-terminal hydrolase BAP1
<b>Performing lab:</b>	AHL - Immunohistochemistry
<b>Days set up:</b>	Mo - Fr
<b>TAT:</b>	1 - 2 days
<b>Method:</b>	Immunohistochemical staining and microscopic examination

QUESTIONS: Contact your Allina Health Laboratory account representative, or our Client Services department

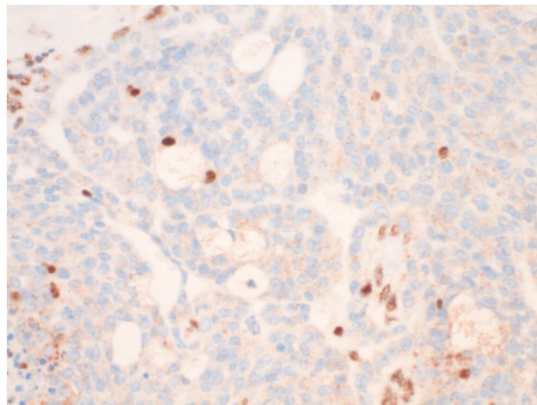
**Clinical  
information:**

**Specifications**

BAP1 is a tumor suppressor protein frequently lost in mesotheliomas and in other malignant neoplasms including melanomas and carcinomas. Renal cell carcinoma and intrahepatic cholangiocarcinoma show frequent nuclear loss of BAP1. Loss of BAP1 nuclear staining has also been reported in other carcinomas including lung non-small cell carcinomas and breast cancer.

**Staining pattern**

- Loss of nuclear BAP1 staining in a population of tumor cells defined by IHC as mesothelial in origin is diagnostic of malignant mesothelioma.
- Intact nuclear staining in mesothelial cells does not rule out malignant mesothelioma. Consider additional testing (MTAP IHC, p16 FISH testing).



*Loss of nuclear BAP1 staining in malignant mesothelioma. Nuclear BAP1 staining in background lymphocytes.*

**Applications**

- Loss of nuclear BAP1 staining can be used to differentiate mesothelioma from reactive mesothelial proliferations. Mesothelial origin should be first established using a panel of IHC markers (WT-1, D240, Calretinin, MOC31, Claudin-4, etc.).
- Loss of nuclear BAP1 staining by immunohistochemistry is highly concordant with BAP1 mutation, with a reported specificity of 100%.
- Reported overall BAP1 sensitivity for pleural mesotheliomas is 50-65%. Reported sensitivity for mesothelioma subtypes: 61-77% for epithelioid mesothelioma, 33-49% for biphasic malignant mesothelioma, 0-22% for sarcomatoid mesothelioma. Reported sensitivity for peritoneal mesothelioma is estimated to be 55-67%.

QUESTIONS: Contact your Allina Health Laboratory account representative, or our Client Services department