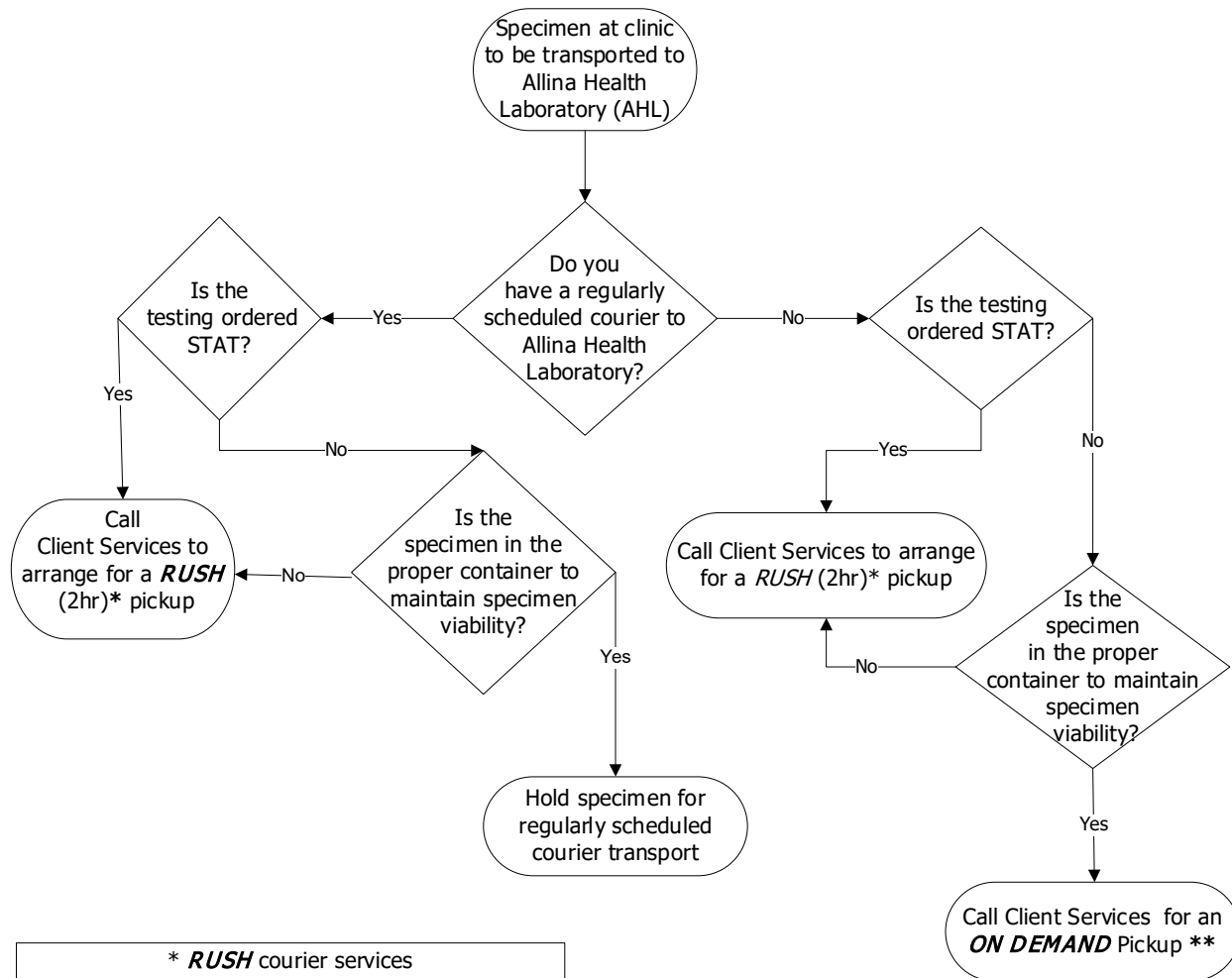


Unscheduled Courier Process



*** RUSH courier services**

RUSH courier services have a 2 hour TAT (from the time the request is placed to the time the specimen is dropped at AHL).

Unless you have an AHL lockbox, calls to request RUSH services must be received at least 2 hours prior to your closing.

RUSH courier services can be requested Mo-Fr between the hours of 7am and 7pm.

Requests to AHL for Rush Courier Service will be charged to your vendor account according to mileage tier assigned.

Contact your Allina Health Laboratory Account Representative for details.

**** ON DEMAND Courier Services**

Clients open until at least 5pm, with no lockbox, must call by 1pm

Clients open until at least 7pm, with no lockbox, must call by 3pm

Clients open until 10pm or later, *or* utilizing an AHL lockbox, must call by 5pm

Calls received after these times will require a **RUSH** courier service *

Allina Health Laboratory Client Services (612) 863-4678