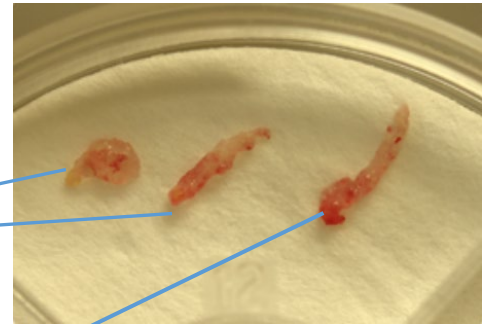


## Core biopsy and lymph node excision process for Lymphoma

*Whenever possible, biopsies for possible lymphoma should be performed Monday-Thursday. This will allow the tissue to reach Allina Health Laboratory and be prepared for ancillary studies, performed by the specialty laboratory departments, prior to the weekend.*

### Core biopsy of lymph node or mass suspicious for lymphoma

1. Place two to four (2 – 4) core biopsies into formalin (formalin sample is the priority).



2. Place one (1) core biopsy into RPMI.



3. Bring the triaged specimen to your lab or package and transport to Allina Health Laboratory with your next available courier.

# Core biopsy and lymph node excision process for Lymphoma

## Lymph node excision

1. Place approximately 1/3 of the lymph node tissue into RMPI.



2. Serial section the remaining 2/3 of the lymph node (~3mm thick) and place into formalin.



3. Bring the triaged specimen to your lab or package and transport to Allina Health Laboratory with your next available courier.